

PART OF THE SW.1/4, SEC. 14, T.5N., R.1W., S.L.B. & M.  
THE RIDGE AT REGENCY HEIGHTS NO. 2

208

IN OGDEN CITY

SCALE 1" = 100'

TAXING UNIT: 25

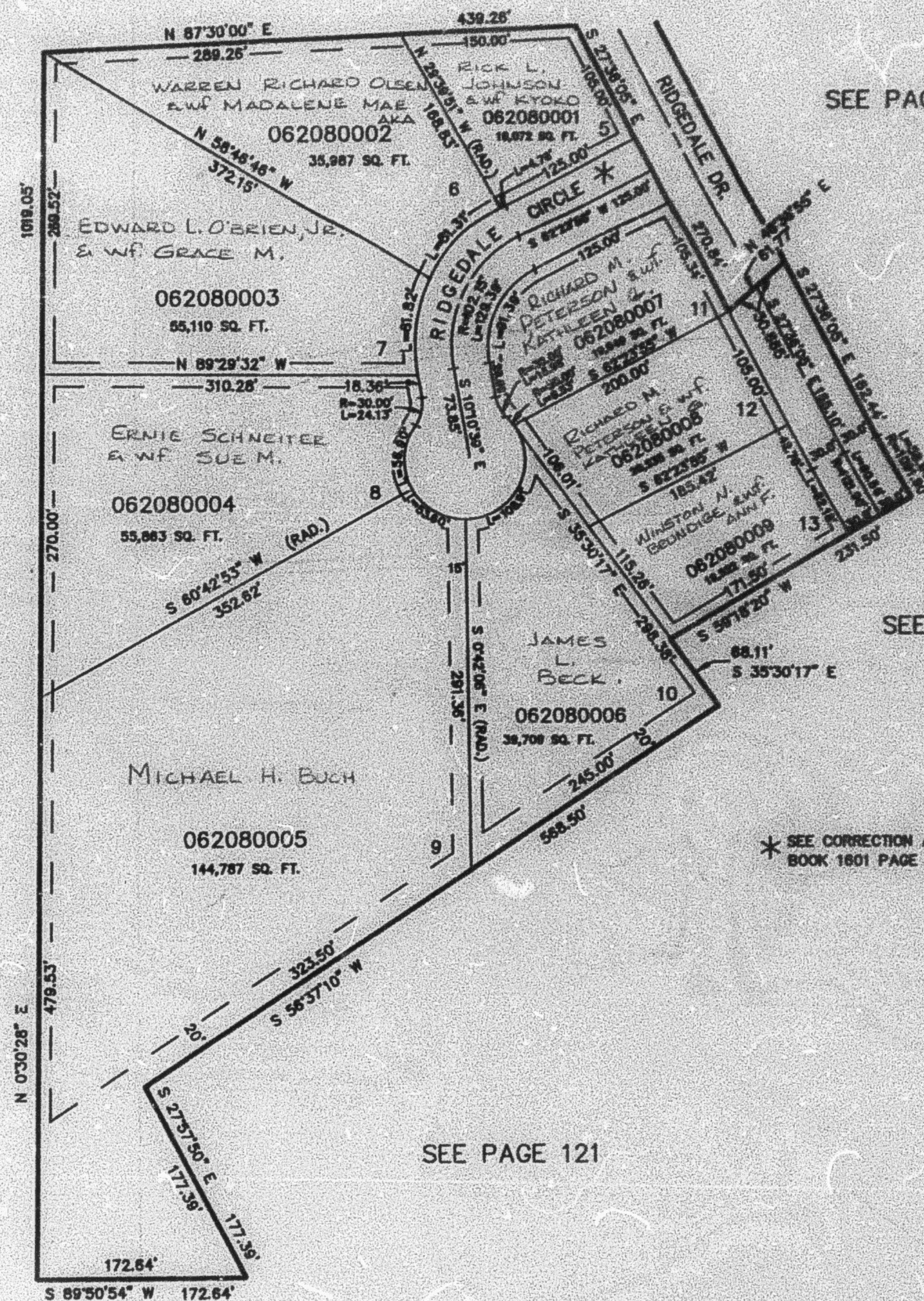
SEE PAGE 207

SEE PAGE 207

SEE PAGE 121

SEE PAGE 121

SEE PAGE 121



\* SEE CORRECTION AFFIDAVIT  
BOOK 1801 PAGE 2879.

10' UTILITY & DRAINAGE EASEMENTS EACH  
SIDE OF PROPERTY LINES AS INDICATED  
BY DASHED LINES EXCEPT AS OTHERWISE  
SHOWN.

SEE DEDICATION PLAT FOR  
NON-BUILDABLE AREA.

FOR COMPLETE ENG DATA SEE  
ORIGINAL DEDICATION PLAT IN  
BOOK 33, PAGE 38 OF RECORDS.